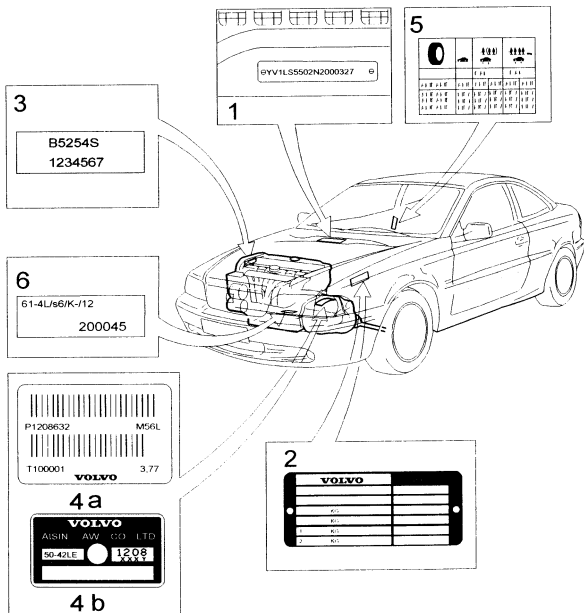


C70

Section 0 General

Plates



1 Type and model year designation and chassis number

- A. All markets: Stamped on upsides of firewall in engine compartment.
 B. USA, Canada, England: Plate located to left on dashboard upper.

2 Product plate

Plate mounted on left wheel arch in

front of spring strut turret.

3 Engine type designation serial and part numbers

Decal stamped on right of cylinder block, above water pump housing, between timing cover and manifold.

Note! The letter "F" in the engine designation is not stamped and is not on the decal either. Also withdrawn in this book.

4 Transmission type designation, component and serial number

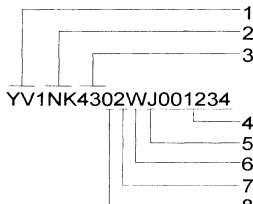
A. Manual transmission: Decal on upper side of transmission.

B. Automatic transmission: Plate on upper side of transmission

5 **Tire pressure**
Decal on right door.

6 **Chassis no. plate**
Plate under left headlamp.

Type and model year designation and chassis number



- 1 Manufacturer's code
- 2 Vehicle type
- 3 Engine type
- 4 Chassis no.
- 5 Factory code
- 6 Model year designation
- 7 US/CAN: Control digits
Other: Transmission type
- 8 Emissions

A0300175

Engine type	Factory code	Model year-code	Transmission type
43 = B 5204 T3	J = Uddevalla (AUTONOVA)	W = 1998*	2 = M 56 L/H, M 59
46 = B 5204 T2			3 = M 58 (AWD)
53 = B 5234 T3			6 = AW 50-42 LE
56 = B 5254 T			

* France = 0

Emissions:

- 0 = Emission code A1, C1, C2, H1
 - 1 = Emission code D3
 - 2 = Emission code E1, G5, K1
 - 3 = Emission code C4
 - 4 = Emission code G1
 - 5 = Emission code C5
 - 6 = Emission code G6
- (see Tables in TP 0302207)

Model year.	Year reference book.	Chassis no.	Engine	Transmission	Final drive
1998	W		B 5204 T2	AW 50-42 M 56 L2	2.76:1 4.25:1
			B 5204 T3	AW 50-42 M 56 L2	2.56:1 4.25:1
			B 5234 T3	AW 50-42 M 56 H	2.56:1 4.00:1
			B 5254 T	AW 50-42 M 56 H	2.56:1 4.00:1

Note! Applies for the following marketing codes:

Remarks	Code 10 (Sweden)	Code 18 (Germany)	Code 21 (Holland)
*	27725	28813	28830
**	27726	28814	28831

Product plate

VOLVO		MADE IN BELGIUM	
A		DD	
B		EEEE	
C ₁	kg	FFF-FF	
C ₂	kg	GGGGG	
C ₃	kg	HHHHHHH	
C ₄	kg	J	

or. Whole Vehicle Type Approval Number. Chassis no. simplification (USA/CAN). Construction date (Australia).

B. Identification number (Type designation)

C₁. Max total weight

C₂. Max train weight (car + trailer)

C₃. Max front axle pressure

C₄. Max rear axle pressure

D. Marketing code (See Table in TP

0302207)

E. Interior code (see Table in TP 0302207)

F. Outer color, code/supplier/paint type (see Table in TP 0302207)

G. S bulletin (Options)

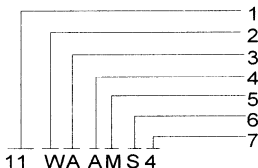
H. Chassis code

J. Vehicle approval number (supplementary information)

Chassis code

Chassis codes are interpreted as follows:

- 1 Spring, front: 35 46 640
Shock absorber, front: 91 40 070
- 2 Anti-roll bar, front: 35 46 859
- 3 Shock absorber, rear: 68 00 327
- 4 Spring, rear: 35 46 893
- 5 Anti-roll bar, rear: 36 46 386
- 6 Combined auxiliary spring front/rear:
91 40 066 / 35 46 038
- 7 Steering gear: TRW



A0300064

Terminal 1	Combined auxiliary spring, front/shock absorber, front	
	Spring, front	Shock absorber, front
11	35 46 640	91 40 070
15	35 46 640	91 40 072
1L	35 46 640	91 40 072
1X	35 46 640	91 40 072
1T	35 46 640	68 16 319
21	35 46 641	91 40 070
25	35 46 641	91 40 072
2C	35 46 641	91 40 072
2L	35 46 641	91 40 072
2T	35 46 641	68 16 319
2V	35 46 641	91 40 072
2X	35 46 641	91 40 072
31	35 46 642	91 40 070

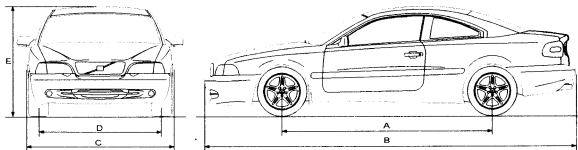
Terminal 1	Combined auxiliary spring, front/shock absorber, front	
	Spring, front	Shock absorber, front
35	35 46 642	91 40 072
3L	35 46 642	91 40 072
45	35 46 643	91 40 072
55	35 46 644	91 40 072
6X	91 40 130	91 40 072
7L	35 46 833	91 40 072
7X	35 46 833	91 40 072
8X	91 40 131	91 40 072
AA	35 46 640	91 40 070
CA	35 46 640	91 40 070
CC	35 46 640	91 40 072
EE	35 46 641	91 40 070
FF	35 46 641	91 40 072
F2	91 69 027	91 40 072
GG	35 46 642	91 40 070
HH	35 46 642	91 40 072
JJ	35 46 643	91 40 072
KK	35 46 833	91 40 070
S1	35 46 642	91 40 072
S2	35 46 640	91 40 072
S3	35 46 641	91 40 072
S4	35 46 643	91 40 072

Terminal 2	Anti-roll bar, front	Terminal 3	Shock absorber, rear
W	35 46 859	A	68 00 327
X	35 46 860	C	13 87 929
Y	35 46 861	E	91 40 238
Z	91 51 441	F	91 40 391
A	91 73 471	G	91 40 263
		H	91 40 264
		J	91 40 806
		L	68 16 327
		M	91 57 306

Terminal 4	Spring, rear	Terminal 5	Anti-roll bar, rear
A	35 46 893	M	35 46 386
C	91 40 099	N	35 46 389
E	35 46 335	P	35 46 388
F	91 40 100	U	—————
G	35 46 285	V	91 40 203
H	91 40 035	W	91 57 312
J	91 40 132		
K	91 40 133		
L	91 40 807		
M	91 73 775		

Terminal 6	Combined auxiliary spring front/rear	
	Auxiliary spring, front	Auxiliary spring, rear
S	91 40 066	35 46 038
L	91 40 128	35 46 705
H	91 40 066	35 46 705

Terminal 7	Steering gear
4	TRW
5	SMI



A0390173

Measurement

A	Wheelbase	mm	2664
B	Length	mm	4716
C	Breadth	mm	1817
D	Track width		
	front	mm	1521
	rear	mm	1518
E	Height, approx (dependent on tire type)		
	Coup	mm	1414
	Conv	mm	1429

Weight

Approx. weight for empty car with full fuel tank	kg	1450-1570
Max roof load	kg	100 (Coup)
Maximum trailer weight		
unbraked	kg	500
braked	kg	1600

Capacity information

Fuel tank/remaining capacity	liters	70 / 2
------------------------------------	--------	--------