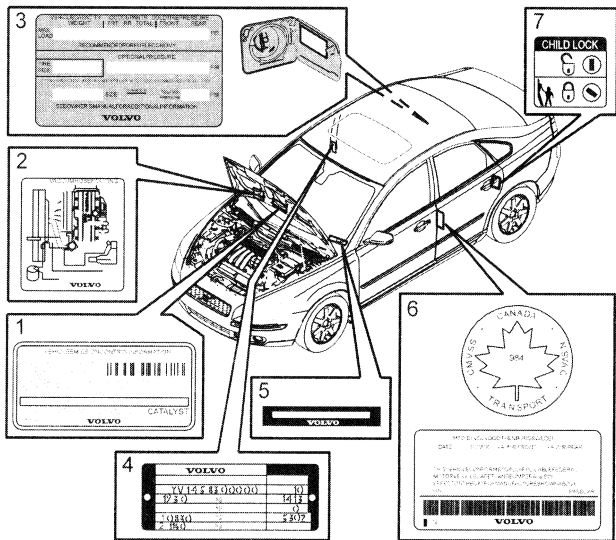


S40(04-)

Section 0 General

Plates



1 Vehicle Emission Control Information: Label on the underside of the hood.

2 Vacuum hose routing: Positioned on the underside of hood.

3 Loads and Tire Pressures: Label inside of fuel filler door.

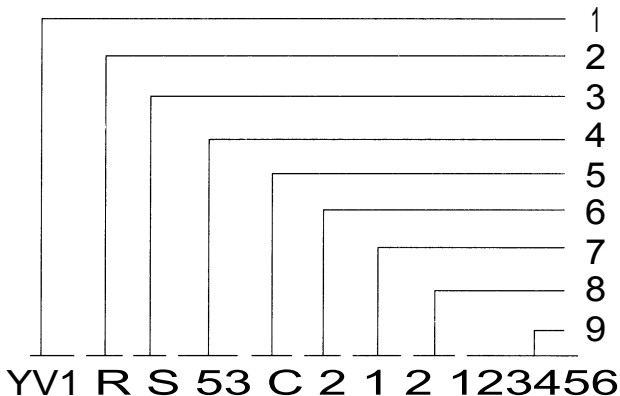
4 Model plate: Vehicle Identification Number (VIN). Codes for color and upholstery, etc. The label is located on the passenger's side center door pillar.

5 Vehicle Identification Number (VIN) Plate located on top left surface on dashboard. The VIN is also stamped on the right hand door pillar.

6 Federal Motor Vehicle Safety Standards (FMVSS) USA, Ministry of transport standards (CMVSS) Canada Label on driver's door.

7 Child safety lock Stamped on rear passenger door jambs.

VIN marking



1 Manufacturer's code

2 Vehicle type

3 Variant

4 Engine type

5 Emissions

6 Gearbox type

Control number (USA/CAN)

7 Model year code

8 Factory code

9 Chassis number.

| Position | Subject | Code | Notes |
|-----------------|---------------------|----------|--|
| 1 (3 character) | Manufacturer's code | YV1 | Volvo Car Corporation |
| 2 (1 character) | Vehicle type | M | S40 |
| 3 (1 character) | Variant | S | S40 |
| 4 (2 character) | Engine type | 38 68 | B 5244 S4 B 5254 T3 |
| 5 (1 character) | Emission code | 2 2 | ULEV2 EM: V2 engine: 38 ULEV2 EM: Z1 engine: 68 |
| 6 (1 character) | Gearbox | 9 | AW55-51 |
| 7 (1 character) | Model year code | 4 | 2004 |

| | | | |
|-----------------|----------------|------|--------------------------------------|
| 8 (1 character) | Factory code | 2 | 22 Volvo Europe Car (VCE) Belgium |
| 9 (6 character) | Chassis number | 2004 | 000001- |

| Engine: | Engine code: | Gearbox: | Final drive: |
|----------------|--------------|----------|--------------|
| B5244S4 | 38 | AW55-51 | 2.44:1 |
| B 5254T3 | 68 | AW55-51 | 2.27:1 |

Product plate

| | | |
|----------------------|----|---|
| VOLVO CARCORP | | I |
| A | | D |
| B | | E |
| C1 | kg | F |
| C2 | kg | G |
| 1- C3 | kg | H |
| 2- C4 | kg | J |

A. Chassis number elucidation.
Car type(3 pos), model year letter,
factory and chassis number

B. VIN code

C. Maximum permitted weight
USA/CANADA have this information on
the FMVSS/CMVSS label, see next page

C₂. Maximum train weight
(car + trailer)

USA/CANADA have this information on
the FMVSS/CMVSS label, see next page

C₃. Maximum front axle weight
USA/CANADA have this information on
the FMVSS/CMVSS label, see next page

C₄. Maximum rear axle weight

USA/CANADA have this information on
the FMVSS/CMVSS label, see next page

I. Manufacturing country

D. Market code, MC
(See: Tables)

E. Interior code
(See: Tables)

F. Paint code
Code / supplier / paint type
(See: Tables)

G. Service bulletin (Option)

H. Chassis code See chassis code

J. Additional information for the WVTA

M0300272

FMVSS label

| MFD. BY VOLVO | | | |
|--|---------------|---------------------|--------------------|
| DATE | GV.W.A | GA.W.R.FRONT | GA.W.R.REAR |
| A | C | D | E |
| THIS VEHICLE CONFORMS TO ALL APPLICABLE FEDERAL MOTOR VEHICLE SAFETY, BURGLAR AND THEFT PROTECTION STANDARDS IN EFFECT ON THE DATE OF MANUFACTURE SHOWN ABOVE | | | |
| VIN | F | | PASS._CAR |
| G | | | |
| I | VOLVO | | 35:4635 |

Label located on the rear edge of the B-pillar.

See weight table chassis code.

- A. Manufacturing month and year.
- C. Max. permitted total weight
- D. Max. permitted weight front axle

E. Max. permitted weight rear axle

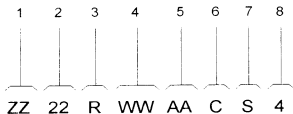
F. VIN code

G. VIN code as barcode

Chassis code

Chassis code 2004- is interpreted as follows:

- 1 Spring, front
- 2 Shock absorber, front
- 3 Anti-roll bar, front
- 4 Spring, rear
- 5 Shock absorber, rear
- 6 Anti-roll bar, Rear
- 7 Auxiliary spring, front
- 8 Auxiliary spring, rear.



R6.01938

1 Spring, front

| Chassis code | Spring, front | Marker ink | Remarks |
|--------------|---------------|------------------|-------------|
| 11 | 30666202 | 3 red | 18 N/mm |
| 12 | 30666203 | 2 red 1 green | 19 N/mm |
| 13 | 30666204 | 2 red 1 orange | 20 N/mm |
| 14 | 30666205 | 2 red 1 brown | 21 N/mm |
| 15 | 30666206 | 2 red 1 blue | 22 N/mm |
| 16 | 30666207 | 2 red 1 yellow | 23 N/mm |
| 17 | 30666208 | 2 red 1 white | 22 N/mm T5 |
| 18 | 30666209 | 2 red 1 grey | 23 N/mm T5 |
| 19 | 30666210 | 2 red 1 pink | 24 N/mm T5 |
| 20 | 30666211 | 2 red 1 wine red | 25 N/mm T5 |
| 21 | 30683177 | 2 green 1 pink | 24 N/mm AWD |
| 22 | 30666904 | 2 green 1 yellow | 25 N/mm AWD |
| 23 | 30666903 | 2 green 1 white | 26 N/mm AWD |

2 Shock absorber, front

| Chassis code | Shock absorber | Remarks |
|--------------|----------------|---------|
| 11 | 30683608 | FD72 |
| 11 | 30683609 | FD72 |
| 12 | 30683610 | FS23 T5 |
| 12 | 30683611 | FS23 T5 |
| 13 | 30666900 | FS19 |
| 13 | 30666901 | FS19 |

3 Anti-roll bar, front

| Chassis code | Anti-roll bar | Marker ink | Remarks |
|--------------|---------------|------------|---------|
| 1 | 30666127 | 1 blue | 23 mm |
| 2 | 30647738 | 1 orange | 22.5 mm |
| 3 | 30666197 | 1 yellow | 23.5 mm |
| 4 | 30647427 | 1 white | 24 mm |
| 5 | 30683804 | 1 blue | 23.0 mm |
| 6 | 30683805 | 1 yellow | 23.5 mm |

4 Spring, rear

| Chassis code | Spring | Marker ink | Remarks |
|--------------|----------|-------------------|-------------|
| 11 | 30666218 | 2 white 1 red | 27 N/mm |
| 12 | 30666219 | 2 white 1 brown | 28.5 N/mm |
| 13 | 30666220 | 3 white | 30 N/mm |
| 14 | 30666221 | 2 white 1 pink | 31 N/mm |
| 15 | 30666222 | 2 white 1 yellow | 32 N/mm |
| 16 | 30666223 | 2 white 1 green | 33 N/mm |
| 17 | 30666282 | 1 silver 1 orange | Nivomat |
| 18 | 30666283 | 1 silver 1 yellow | Nivomat |
| 19 | 30666284 | 1 silver 1 brown | Nivomat |
| 20 | 30666285 | 1 silver 1 white | Nivomat |
| 21 | 30666286 | 1 silver 1 pink | Nivomat |
| 22 | 30666287 | 1 silver 1 grey | Nivomat |
| 23 | 30666224 | 1 green 1 white | 31 N/mm AWD |
| 24 | 30666225 | 1 green 1 brown | 32 N/mm AWD |
| 25 | 30666226 | 1 green 1 yellow | 33 N/mm AWD |
| 26 | 30666227 | 1 green 1 orange | 34 N/mm AWD |
| 27 | 30666228 | 1 green 1 blue | 35 N/mm AWD |

5 Shock absorber, rear

| Chassis code | Shock absorber | Remarks |
|--------------|----------------|---------|
| 11 | 30683597 | RDT3 |
| 12 | 30683599 | RS28 |
| 13 | 30666905 | R13A |
| 14 | 30666909 | R9A AWD |
| 15 | 8672028 | Nivomat |
| 16 | 30666294 | Nivomat |

6 Anti-roll bar rear

| Chassis code | Anti-roll bar | Marker ink | Remarks |
|--------------|---------------|------------|--------------|
| 1 | 30683230 | orange | 20 mm S40 |
| 2 | 30683229 | green | 21 mm V50 |
| 3 | 30683231 | white | 21.5 mm |
| 4 | 30666304 | | 21 mm |
| 5 | 30683259 | - | 20.5 mm, V50 |

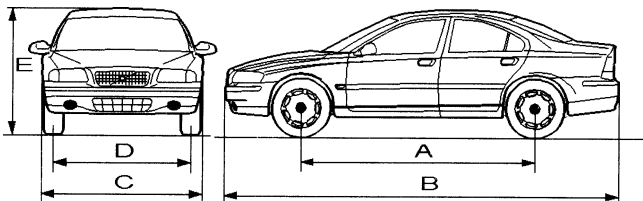
7 Auxiliary spring, front

| Chassis code | Auxiliary spring | Remarks |
|--------------|------------------|---------|
| 1 | 30683162 | |

8 Auxiliary spring, rear

| Chassis code | Auxiliary spring | Remarks |
|--------------|------------------|---------|
| 1 | 30666243 | |

Length and weight



| Length and weight: | | S40(04-) mm inches |
|--------------------|----------------------------------|-----------------------------------|
| A | Wheelbase | 2640 / 103.9" |
| B | Length | 4468 / 175.9" |
| C | Width | 1770 / 69.7" |
| D | Track width 15 inch rims: | |
| | Front | 1548 / 60.9" |
| | Rear | 1544 / 60.8" |
| | Track width 16 / 16,5 inch rims: | |
| D | Front | 1535 / 60.4" |
| | Rear | 1531 / 60.3" |
| E | Height | 1452 / 57.2" |
| Ground clearance: | | |
| Car + two people | | 119 / 4.7" |
| Aerodynamics | | Cd 0.31 |
| Front area | | m ² / sq ft 2.2 / 23.7 |

| | | |
|--|-----------|---------------------------------|
| Weight information, refer also to the product plate at the front right wheel arch: | | S40(04-) kg/lb |
| Gross vehicle weight | Turbo | 1928/4250 |
| Gross vehicle weight | w/o Turbo | 1887/4160 |
| Maximum roof load | | 75/165 |
| Maximum trailer weight: | | |
| Without trailer brake | | 700/1540 |
| With trailer brake | | 908/2000 |
| Maximum load capacity | | 450/992 |
| Curb weight | B5244 S4 | 1399/3084 |
| Curb weight | | (1429-1461 kg) (3150-3220lb) |
| Weight distribution front/rear | | 61/39 - 62/38 |

Fuel tank S40(04-)
Capacity information: litres/Gallon

Capacity 55/16.4