

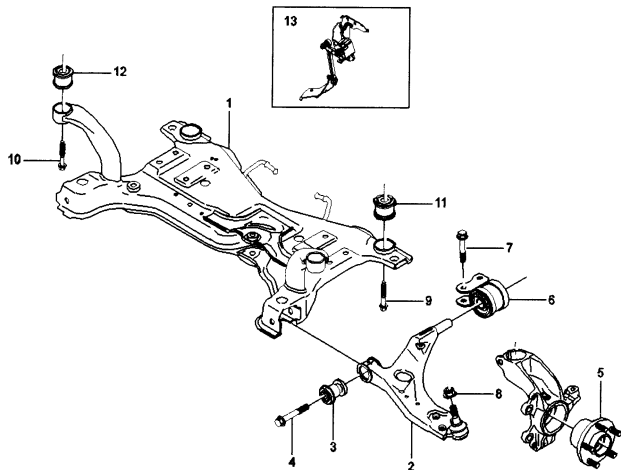
## Section 6 Suspension and steering

## Group 60 Wheel alignment

Turning circle, wall to wall .....	11.1 m (36.4 ft)
Steering ratio, angle/angle .....	15,3:1
Turns of steering wheel end to end .....	2.86

Toe-in:	Check and setting values
Front:	
Camber .....	$-0.6^{\circ} \pm 0.7^{\circ}$
Castor .....	$3.6^{\circ} \pm 1.0^{\circ}$
max variation left/right: $0.25^{\circ}$	
Toe-in, can be adjusted .....	$0.20 \pm 0.10$
Rear:	
Camber .....	$1.5^{\circ} \pm 0.35^{\circ}$
Toe-in, can be adjusted .....	$0.3^{\circ} \pm 0.1^{\circ}$
Thrust angle, can be adjusted .....	$0^{\circ} \pm 0.25'$

## Group 61 Front suspension



JIS 00401

## Front suspension

Number (as illustrated)	P/N	Designation
1	30666843	Frame 2WD
2	30678438	Control arm left, lower
2	30678439	Control arm right, lower
3	30666270	Bushing
4	30683397	Flanged screw
5		Hub
6	30678440	Bushing
7	30683388	Flanged screw
8	30683393	Flanged locknut
9	30683394	Flanged screw
10	30683402	Allen screw
11	30666845	Bushing

12	30666040	Bushing
13		Position sensor

## Tightening torques front suspension

Designation	Nm	lb.ft.	Dimensions
Mechanical component:			
Control arm - Sub-frame, front	175 ± 26	129±19	M14
Control arm - Sub-frame, rear	115 ± 17	84±12	M12
Anti-roll bar bracket - Sub-frame ..	47 ± 7	34±5	M10
Anti-roll bar link - Anti-roll bar	47 ± 7	34±5	M10
Anti-roll bar link - Spring strut	47 ± 7	34±5	M10
Spring strut - Steering arm	90 ± 13	66±10	M12
Ball joint control arm - Steering arm	70 ± 7	51±5	M14
Upper bearing - Body	30 ± 4	22±3	M8
Protective panel ball joint - Steering arm	9 ± 1.4	6±1	M6
Sub-frame, front 2WD- Car body ..	115 ± 17	84±12	M12
Sub-frame, front AWD- Car body	115 ± 17	84±12	M12
Sub-frame, rear 2WD- Car body ...	265 ± 25	195±18	M16
Sub-frame, rear AWD- Car body	265 ± 25	195±18	M16
Drive shaft - Front wheel hub:			
stage 1	35	26	M10
stage 2	90 <sup>1</sup>		
Shock absorber - Upper bearing	47 ± 7	34±5	M12

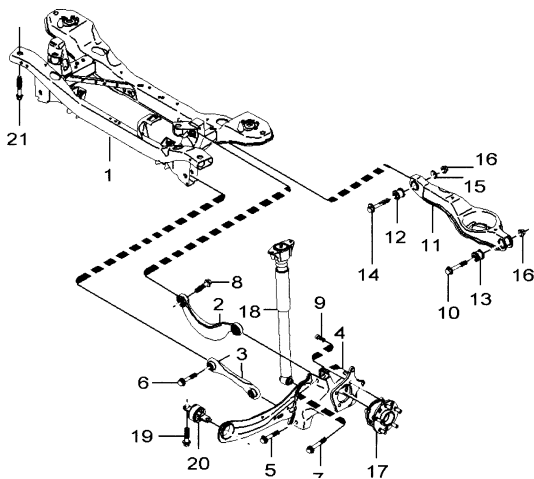
## Group 64 Steering

Steering gear:	
P/N .....	8602853
Turns of the steering wheel lock to lock	2.86
Gear ratios .....	15.3:1
Lubricants:	
Grease .....	Volvo P/N: 11 61 669
Quantity .....	100 grams (0.2 lbs. )

## Tightening torques

Mechanical component: Designation:	Nm	lb.ft	Di- men- sions
Steering gear - Sub-frame	80 ± 12	59±8	M12
Track rod - Ball joint, outer	40 ± 6	29±4	M16x1 5
Ball joint, outer - Steering arm	47 ± 7	34±5	M10
Steering gear - Mounting servo hoses	17 ± 3	12±2	M8
Pressure hose - Pump	30 ± 5	22±3	M16x1 5
Heat deflector plate - Steering gear	10 ± 2.5	7±2	M6
Bracket, servo hoses - Steering gear	4 ± 1	3±0.5	M5
Bracket, servo hoses - Engine	48 ± 8	35±6	M10
Bracket, servo hoses - Bracket, Air conditioning (A/C) compressor	10 ± 1.5	7±1	M6
Bracket, servo hoses - Steering hoses	6 ± 1.5	4±1	M5
Bracket, servo hoses - Side member	2.5 ± 0.4	1.8±0.3	PF5
Bracket, servo hose pump - Servo hose pump	25 ± 6	18±4	M8
Bracket, servo hose pump - Endplate, side member	25 ± 6	18±4	M8
Bracket, servo hose pump - Side member ..	25 ± 6	18±4	M8
Clutch pedal	25 ± 6	18±4	M8
Steering column - Steering gear	25 ± 6	18±4	M8
Steering column - dashboard	25 ± 6	18±4	M8
Steering wheel lock - Steering column	12 ± 2	9±1	M6
Steering wheel - Steering column	47 ± 7	34±5	M10

## Group 65 Rear suspension



JH500545

## Rear suspension

Number (as illustrated)	P/N	Designation
1	30683796	Sub-frame - Front
2	8671921	Control arm, upper
3	30683067	Strut
4	30666531	Strut, right
5	30666532	Strut, left
6	30683388	Flanged screw
7	30683388	Flanged screw
8	30683388	Flanged screw
9	30683381	Allen screw
10	30683382	Flanged screw
11	30666105	Control arm, lower
12	8646157	Bushing
13	8646158	Bushing
14	30683045	Eccentric screw

15	30678443	Eccentric screw
16	30683384	Flanged locknut
17		Hub
18		Shock absorber
19	30683385	Sems screw
20	30666821	Bushing
21	30683386	Sems screw

## Tightening torques rear suspension

Mechanical component Designation:	Nm	lb.ft.	Di- men- sions
Sub-frame - Bodywork ....	115 ± 17	84±12	M12
Control arm upper, - Sub-frame	115 ± 17	84±12	M12
Control arm upper, - Lateral link	115 ± 17	84±12	M12
Sub-frame - Track rod	115 ± 17	84±12	M12
Lateral link - Track rod	115 ± 17	84±12	M12
Bracket, anti-roll bar - Sub-frame	47 ± 7	34±5	M10
Anti-roll bar link - Lower control arm, rear	47 ± 7	34±5	M10
Lower control arm, rear - Sub-frame	90 ± 10	66±7	M12
Lower control arm, rear - Lateral link	115 ± 17	84±12	M12
Shock absorber - Car body	25 ± 3.8	18±3	M8
Rear wheel hub - Lateral link	47 ± 7	34±5	M12
Lateral link - Car body	115 ± 17	84±12	M12
Shock absorber - Lateral link:			
2WD	115 ± 17	84±12	M12
Nivomat 2WD	225 ± 33	165±24	M16
AWD	115 ± 17	84±12	M12
Anti-roll bar link - Anti-roll bar	47 ± 7	34±5	M8
Shock absorber - Upper bearing ....	17 ± 2.5	12±2	M8
Drive shaft - Rear wheel hub	50 ± 12	36±9	M10
Anti-roll bar - Lower control arm - ...	47 ± 7	34±5	M8