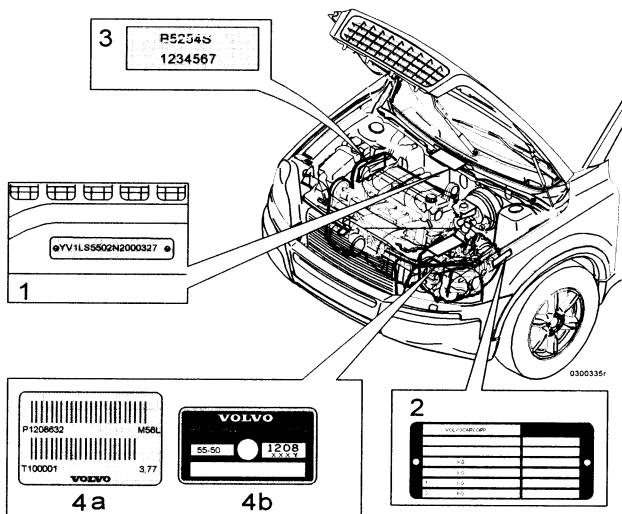


XC90

Section 0 General

Plates



0300335r

R0300335

1 VIN marking: Type and model year designation and chassis number. Stamped in the engine compartment on the upper side of the bulkhead. VIN- plate, located on the upper side of the dashboard

2 Product plate: Located in the engine compartment on the right wheel arch in front of the spring strut turret

3 Engine type designation, serial and part numbers: Decal on the timing cover. Also stamped on the cylinder

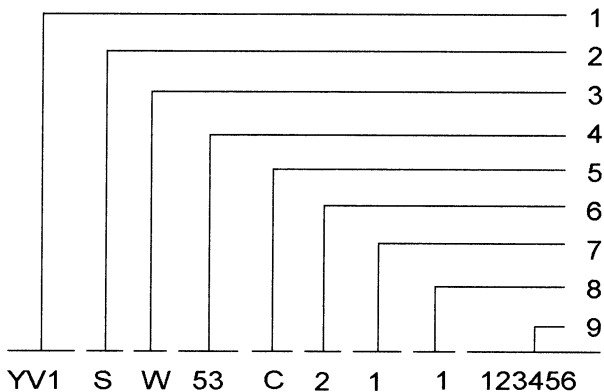
block, above the water pump housing, between the timing cover and the manifold.

Diesel engines: Stamped in the cylinder block slightly in front of the diesel pump

4 Gearbox type designation, part and serial number:

4a) Manual gearbox: Decal on front side.
4b + 4c) Automatic gearbox AWD: Plate on the top.

VIN marking



1 Manufacturer's code

2 Vehicle type

3 Variant

4 Engine type

5 Emissions

6 Gearbox type

Control number (USA/CAN)

7 Model year code

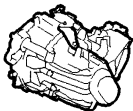
8 Factory code

9 Chassis number.

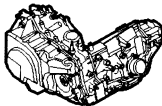
Position	Subject	Code	Notes
1 (3 character)	Manufacturer's code	YV1	Volvo Car Corporation
2 (1 character)	Vehicle type	C	XC90
3 (1 character)	Variant	N M	XC90 2WD XC90 AWD
4 (2 character)	Engine type	59 79 91	B5254 T2 D5244 T B6294 T

XC90*VIN marking*

5 (1 character)	Emission code	9	F2 Engine 79
		G	X1. Engines 59, 91
		B	X3. Engines 59, Arab states
		C	L3 Arab states, Motor 91
		B	X3. Engines 91, Arab states
6 (1 character)	Gearbox	4	M66 AWD
		7	AW55-50 AWD
		8	4T65 AWD
7 (1 character)	Model year	3	2003
		4	2004
8 (1 character)	Factory code	1	21 Volvo Torslanda (VTM)
9 (6 character)	Chassis number		6 figure serial number 2003: 000001-049000 2004: 050000-



M66



GM4T65-E



AW55-XX

Combination Engine- Gearbox

Engine:	Engine code:	Gearbox:	Final drive:
B5254 T2	59	AW55-50 (AWD) M66 AWD	2.86:1 5.66:1
D 5244 T	79	AW55-50 (AWD) M66 AWD	2.86:1 4.94:1
B6294 T	91	4T65 AWD	3.69:1

Product plate

VOLVO CARCORP		I
A		D
B		E
C1	kg	F
C2	kg	G
1- C3	kg	H
2- C4	kg	J

A. Type approval number.
Whole Vehicle Type Approval Number (WVTA)

Chassis no. simplification (USA/CAN).
 Construction date (Australia)

B. Identification number

Type designation

C₁. Max gross vehicle weight

C₂. Max train weight (car + trailer)

C₃. Max front axle load

C₄. Max rear axle load

I. Country of manufacture

D. Market code (See Tables)

E. Interior code

F. Paint finish Code / supplier / paint type
 (see Tables)

G. Service bulletin (Options)

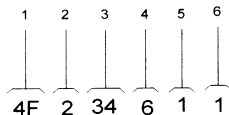
H. Chassis code See next page

J. Additional information for the WVTA.

Chassis code

Chassis code -2003 is interpreted as follows:

- 1 Spring strut, front
Shock absorber, front
- 2 Anti-roll bar, front
- 3 Spring, rear
Shock absorber, rear
- 4 Anti-roll bar, Rear
- 5 Auxiliary spring, front
- 6 Auxiliary spring, rear.



Chassis code 1	Spring strut Assembly	Combined spring / shock absorber	
		Spring, front	Shock absorber, front
4L	—	9465464	8667248
2L	86 23 803	94 92 464	94 92 564
2M	86 24 623	94 92 226	86 24 604
2M	86 24 624	94 92 226	86 24 604
2N	86 24 625	94 92 227	86 24 604
2N	86 24 626	94 92 227	86 24 604
2P	86 24 627	94 65 464	86 24 604
2P	86 24 628	94 65 464	86 24 604
2R	86 34 003	86 24 883	86 24 604
2R	86 34 004	86 24 883	86 24 604
2S	86 34 005	94 65 472	86 24 604
2U	86 34 006	86 24 883	94 92 564
2U	86 34 145	86 24 883	94 92 564
2V	94 92 487	94 92 226	94 92 564
2X	94 92 488	94 92 226	94 92 568
2Y	94 92 493	94 92 227	94 92 568
2Z	86 23 806	94 65 464	94 92 568
3A	86 34 036	94 65 472	94 92 568
3B	86 34 034	86 24 883	94 92 568
2X	94 92 505	94 92 226	94 92 568
3B	86 34 035	86 24 883	94 92 568
2Y	94 92 506	94 92 227	94 92 568

XC90

Chassis code

Chassis code 1	Spring strut Assembly	Combined spring / shock absorber	
		Spring, front	Shock absorber, front
2Z	86 23 807	94 65 464	94 92 568
3C	86 34 397	86 34 328	94 92564
3C	86 34 330	86 34 328	94 92564
3D	86 34 331	86 34 329	94 92 564
3D	86 34 332	86 34 329	94 92 564
3E	86 34 044	94 65 472	94 92 564
3E	86 34 045	94 65 472	94 92 564
1W	86 34 461	94 92 227	94 92 564
1W	86 34 466	94 92 227	94 92 564
2L	86 34 468	94 92 464	94 92 564
2M	86 34 486	94 92 226	86 24 604
2M	86 34 487	94 92 226	86 24 604
2N	86 34 488	94 92 227	86 24 604
2N	86 34 491	94 92 227	86 24 604
2P	86 34 492	94 65 464	86 24 604
2P	86 34 494	94 65 464	86 24 604
2R	86 34 498	86 24 883	86 24 604
2R	86 34 499	86 24 883	86 24 604
2S	86 34 500	94 65 472	86 24 604
2U	86 34 502	86 24 883	94 92 564
3C	86 34 503	86 34 328	94 92 564
3C	86 34 504	86 34 328	94 92 564
3D	86 34 505	86 34 329	94 92 564
3D	86 34 506	86 34 329	94 92 564
2U	86 34 507	86 24 883	94 92 564
3E	86 34 508	94 65 472	94 92 564
3E	86 34 509	94 65 472	94 92 564
2V	86 34 511	94 92 226	94 92 564
2Y	86 34 513	94 92 227	94 92 568
2X	86 34 512	94 92 226	94 92 568
2Z	86 34 514	94 65 464	94 92 568
3A	86 34 515	94 65 472	94 92 568
3B	86 34 516	86 24 883	94 92 568
2X	86 34 517	94 92 226	94 92 568
3B	86 34 518	86 24 883	94 92 568

Chassis code 1	Spring strut Assembly	Combined spring / shock absorber	
		Spring, front	Shock absorber, front
2Y	86 34 519	94 92 227	94 92 568
2Z	86 34 520	94 65 464	94 92 568
2A	86 34 462	94 92 224	94 92 564
2B	86 34 463	94 92 228	94 92564
1T	86 34 464	94 92 179	94 92 564
1F	86 34 465	94 92 178	94 92 564
1W	86 34 466	94 92 227	94 92 564
2A	86 34 467	94 92 224	94 92 564
2B	86 34 469	94 92 228	94 92 564
1F	86 34 470	94 92 178	94 92 564
1S	86 34 471	94 92 223	94 92 567
1X	86 34 472	94 92 226	94 92 564
1T	86 34 473	94 92 179	94 92 564
2D	86 34 474	94 92 227	94 92 566
2E	86 34 475	94 92 224	94 92 566
2F	86 34 476	94 92 228	94 92 566
1P	86 34 477	94 92 221	94 92 564
2G	86 34 478	94 92 179	94 92 566
2H	86 34 479	94 92 178	94 92 566
2J	86 34 480	94 92 227	94 92 566
1B	86 34 481	94 92 220	94 92 567
2E	86 34 482	94 92 224	94 92 566
2F	86 34 483	94 92 228	94 92 566
2H	86 34 484	94 92 178	94 92 566
1Z	86 34 485	94 92 222	94 92 567
1U	86 34 489	94 92 221	94 92 564
2K	86 34 490	94 92 226	94 92 566
2G	86 34 493	94 92 179	94 92 566
1V	86 34 495	94 92 220	94 92 567
1Z	86 34 496	94 92 222	94 92 567
1H	86 34 497	94 92 180	94 92 567
1H	86 34 510	94 92 180	94 92 567
8C	94 87 955	86 34 329	86 24 604
4C	86 34 922	94 61 950	94 92 568
4A	86 34 809	94 65 464	94 92 564

XC90

Chassis code

Chassis code 1	Spring strut Assembly	Combined spring / shock absorber	
		Spring, front	Shock absorber, front
4B	86 34 804	94 61 950	94 92 564
2T	86 34 803	94 61 950	86 24 604
4B	94 87 907	94 61 950	94 92 564
3E	94 87 908	94 65 472	94 92 564
2S	94 87 911	94 65 472	86 24 604
8C	94 87 955	86 24 604	86 24 604

Chassis code 2	Anti-roll bar, front	Marker ink
1	92 00 443	Orange
2	94 61 889	Yellow
3	94 92 040	White
4	94 61 483	Blue
X	9492039	23.5 mm

Chassis code 3	Rear axle			
		Spring, rear	Colour	Shock absorber, rear
34	86 34 018	94 92 148	2 Green	94 61 729
33	86 34 026	86 24 884	Green	94 61 729
35	92 00316	94 61 493	Blue	94 85 026
27	86 34 025	86 24 884	Green	86 24 605
27	86 34 027	86 24 884	Green	86 24 605
28	86 34 028	86 24 884	Green	94 61 278
28	86 34 029	86 24 884	Green	94 61 278
29	86 34 032	94 92 148	2 Green	94 61 278
30	86 23801	94 61 493	Blue	94 92 965
29	94 92 529	94 92 148	Green	94 61 278
30	86 23 802	94 61 493	Blue	94 92 965
31	86 34 022	94 92 148	2 Green	86 24 605

Chassis code 3	Rear axle			
		Spring, rear	Colour	Shock absorber, rear
27	86 34 023	86 24 884	Green	86 24 605
31	86 34 024	94 92 148	Green	86 24 605
32	86 24 655	94 61 493	Blue	86 24 606
32	86 24 656	94 61 493	Blue	86 24 606
32	86 24 657	94 61 493	Blue	86 24 606
70	—	9173810	Brown	8646803

Chassis code 4	Anti-roll bar, rear
6	91 73 811
2	91 73 810

Chassis code 5	Auxiliary spring, front
1	91 91 383
3	86 72 087

Chassis code 6	Auxiliary spring, rear
1	91 57 115

2 Shock absorber, front

Chassis code	Shock absorber	Remarks
11	8667248	S60, chassis 2
12	8667250	chassis 1
13	8667252	chassis 4
14	8667253	chassis 2, not S60
15	8667254	XC70 chassis 1
16	30639939	S60/V70 Four-C
17	30645515	XC90

3 Anti-roll bar, front

Chassis code	Anti-roll bar	Marker ink	Remarks
1	8672471	orange	23 mm XC90
2	9461483	blue	24 mm
3	9492039	green	23.5 mm
4	9492040	white	24.5 mm

4 Spring, rear

Chassis code	Spring	Marker ink	Remarks
11	8624884	1 green	
12	8666289	1 green + 1 red	V70 AWD nivomat
13	8666290	2 green + 1 red	V70 AWD nivomat
14	8666292	2 yellow + 1 red	
15	8634341	2 white	Right-hand side, V70 AWD
15	8646867	1 blue	Left-hand side, V70 AWD
16	8646865	2 red + 1 blue	Left-hand side, XC70
16	9473371	3 red	Right-hand side, XC70
17	8634340	1 white	Right-hand side, V70 AWD
17	8646868	1 white + 1 blue	Left-hand side, V70 AWD
18	8667019	1 lilac	S60 sport
22	9191413	1 red	chassis 2, nivomat
23	9200609	1 white	
24	9200610	2 white	
25	9461493	1 blue	
26	9473385	2 lilac	
27	9492148	2 green	

XC90

Chassis code

28	9492186	1 brown	
29	9492187	2 brown	
30	9492188	2 red	
31	9492714	2 blue	
33	30639052	2 yellow	S60 AWD
32	30639053	1 brown + 2 red	S60 AWD nivomat
34	30645489	1 orange + 1 blue	XC90 light
35	30645490	1 orange + brown	XC90 medium
36	30645491	1 orange + 1 red	XC90 heavy
37	30645466	1 white + 1 blue	XC90 light nivomat
38	30645467	1 white + 1 green	XC90 medium nivomat
41	30645468	1 white + 1 red	XC90 heavy nivomat
39	30639872	1 blue + 1 yellow	S60 AWD Four-C
40	30639873	1 blue + 2 yellow	V70 AWD Four-C

5 Shock absorber, rear

Chassis code	Shock absorber	Remarks
11	8624605	S80 chassis 1
12	9200406	S80 chassis 2
13	8646921	
14	8671722	S60 AWD chassis 2
15	8646803	S60 chassis 2
16	30639384	
17	8646974	V70 chassis 1
18	8671712	V70 chassis 2
19	8671713	XC70 Diesel chassis 1
20	30639386	
21	30639383	
22	8672199	S60 chassis 4
23	30639385	
24	9461729	V70 chassis 2
25	30639513	XC90
26	30639791	XC90 nivomat
27	30639389	
28	30639391	
29	30639392	
30	30639394	
31	30639387	

32	30639388	S60/V70 R Four-C
33	30639944	
34	30645462	

6 Anti-roll bar, rear

Chassis code	Anti-roll bar	Marker ink	Remarks
0	—	—	without the anti-roll bar
1	6816152	yellow	20 mm
2	8630547	yellow	14 mm, AWD
3	8630548	white	16 mm, AWD
4	8671723	green	17 mm, S60 AWD
5	8672167	orange	20 mm, Four-C
6	8672168	lilac	22 mm, Four-C
7	9173810	blue	19 mm
8	9173811	white	21 mm
9	9465759	red	23.5 mm XC90
A	9490629	yellow	XC90

7 Auxiliary spring, front

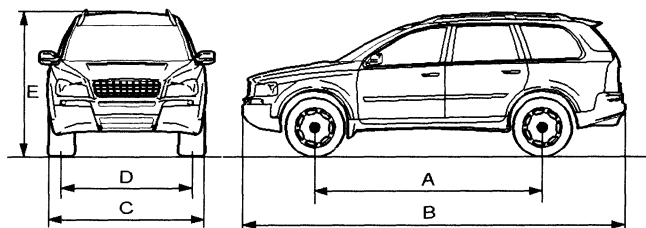
Chassis code	Auxiliary spring	Remarks
1	9191383	S80
2	9489136	S80 special
3	8666444	
4	8646911	
5	30647076	XC90

8 Auxiliary spring, rear

Chassis code	Auxiliary spring	Remarks
1	9157115	
2	8672488	

XC90

Chassis code



Length and weight:

Dimensions:		XC90 mm / inches
A	Wheelbase	2859 /112.5"
B	Length	4798 /188.9"
C	Width	1898 /74.7"
D	Track width 16 inch rims: For 17", 18" rims the track width is 12mm narrower (0.5 inches)	
	Front	1634 /64.3"
	Rear	1624 /63.9"
E	Height	1743/68.6"
Ground clearance:		218/8.5"

Weight information, refer also to the product plate at the front left wheel arch and the registration card:	XC90 kg 5 seats	XC90 kg 7 seats
Maximum total weight B5254 T2	1982	2046
Maximum total weight B6294 T	2620	2760
Weight unladen		
Diesel		
Maximum roof load	100	
Maximum load weight	550	610
Maximum trailer weight:		
Unbraked	750	750
Braked:	2250	2250
Weight distribution front/rear %	54/46	53/47

Fuel tank	litres
Capacity information:	
Executable volume, petrol engine, turbocharger	72
Non-executable volume (remaining volume)	1